

acoupanel[®]
acoustic pinboard



Pin board

Velcro
Adhesive Strips

Pin board



acoupanel[®] Pinboard
www.feltech.co.th

acoupanel® I Pinboard is a dual layer with a soft decorative acoustic surface that can transform noisy interior and create a positive influence on the productivity and well-being in the office.

The functional design and color create a pleasant workplace in addition to the acoustic functionality,

acoupanel® I Pinboard is made of acoustic layers made of millions of recycled PET fibers regenerated from discarded PET bottles. It is non-allergenic and environmental friendly.

Product Name	acoupanel® Pinboard
Product Category	Pinnable acoustic panel
Material	100% Polyester fibers with >60% recycled content
Weight	3,000 gram / sq.m
Density	200 kgs / Cubic.m
Thickness	15 mm +/-10%
Size	1,220mm x 2,440 mm 1,220mm x 2,800 mm

Performance

Fire rating	AS/ISO 9705, Group 1 Classification
TVOC emission	CDPH-IAQ V1.1 2017, ≤ 0.5mg/m ³
Sound Transmission Class	STC 5, ISO 717 Part 1
Sound Absorption	NRC 0.55 with no air gap, ISO 354

Frequency f (Hz)	125	250	500	1000	2000	4000
	0.01	0.11	0.37	0.78	1.00	0.98

NRC 0.70 with 20mm air gap
NRC 0.75 with 50mm air gap



Meet(s) **SCS Indoor Advantage™ Gold** certification for Indoor Air Quality



100% recyclable at the end of its useful life.



Acoustic performance



Minimum 60% post-consumer recycled material



No Red list chemicals, Formaldehyde & phenol free

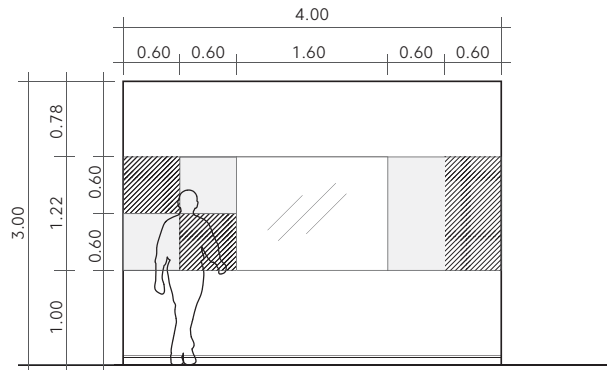


Velcro compatible

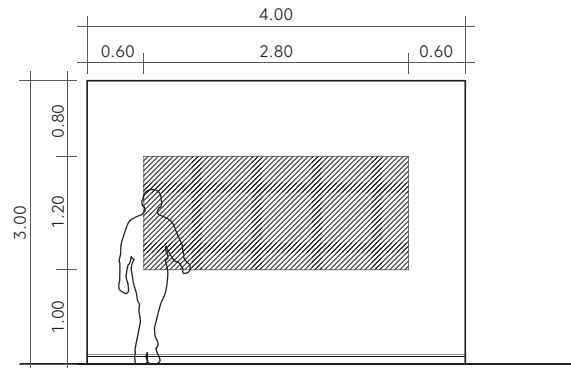
Installation

acoupanel® I Pinboard can be installed in a variety of simple ways.

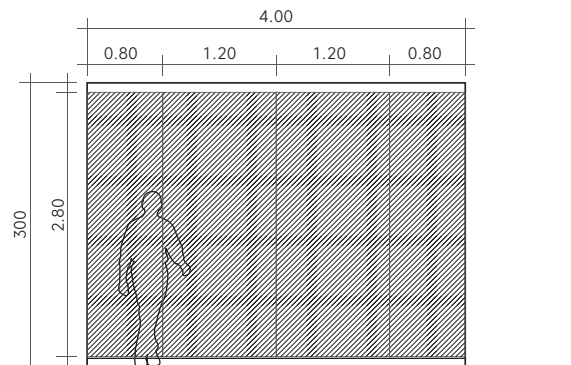
- Bond directly to the wall/ceiling using double sided adhesive tape , Liquidnails, etc
- Insert into a frame and hang
- Glue to undersides of furniture for sightless sound absorption



Easily reconfigured to suit your needs fully modular in design, you can combine panel with large or small panel or glass board as required.



Can be installed on any wall area. Using L-shape aluminum profile for corners and edges finishes



It is recommended to install above-floor level 3.94" (10 cm) for maintenance. Using L-shape aluminum profile for corners and edges finishes

Care & Maintenance



Periodic dusting and vacuuming helps to maintain panel appearance. Dust with a soft cloth. When vacuuming, use low suction function and a soft brush attachment



Butter



Wasabi



Ivory



Peach



Oregano



Slate Grey



Carrot



Periwinkle



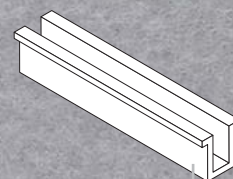
Charcoal



Berry



Azure



U-Wall 5mm with edge
for finish edging

L-channel edge protecting profile
for finish edging



Feltech Manufacturing Co.,Ltd

Feltech pioneered the use of polyester fibers for their non-toxic, non - irritant properties and high efficiency in both sound absorption and thermal insulation. These fibers are also highly recyclable, contributing to cleaner indoor air quality and a more sustainable future.

Feltech operates state-of-the-art factories in Amata City industrial estate, Chonburi, Thailand, equipped with the latest technology, including advanced digital printing. This allows us to print any image or design directly onto our acoustic products, enhancing their high-quality surface finishes and creating uncompromising noise reduction performance for workspaces.

With our expertise in acoustic insulation technologies, our skilled team of designers provides a comprehensive service—from design consultation and technical advice to quotations and installation, ensuring a seamless experience

Our commitment to sustainability ensures a positive impact on both present and future generations.

Sales Office :

3388/92, 25th Floor, Sirinrat Bldg., Rama 4Rd., Klongton,
Klongtoey, Bangkok 10110 Thailand

Map.

<https://maps.app.goo.gl/TBfohCpTDYwRnD7u5>

Manufacturing Facilities : Amata City Chonburi Industrial Estate,

Plant 1

700/377, Moo 6, Donhuaroh, Muang Chonburi.
Chonburi. 20000 Thailand

Map.

<https://maps.app.goo.gl/ZGABMYA8zKUgQ4zB6>

Contact

+66 02 240 3041

line@feltech, FB/IG : feltech.acoustic

info@feltech.co.th

www.feltech.co.th

