



CROSSLINE

50 * 50

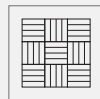
www.feltech.co.th

CROSSLINE

SPECIFICATIONS

Construction	Textured Tufted Loop Pile
Pile Content	Solution dyed nylon with anti static filaments
Pile Treatment	Stain Protector & Soil Repellent
Machine Gauge	1/10
Pile Thickness	4 mm +/- 10%
Total Thickness	8 mm +/- 10%
Tufted Density	200,000 / m ²
Primary Backing	100% non woven synthetic spunbond
Secondary Backing	EcoStep [®] , sound absorption backing (80% recycled PET bottles)
Tile Size	50 cm x 50 cm
No.of Tiles per box	20 Tiles (5.00 SQ.M)

Installation Method



Quarter Turn



Vertical Stair Step



Vertical



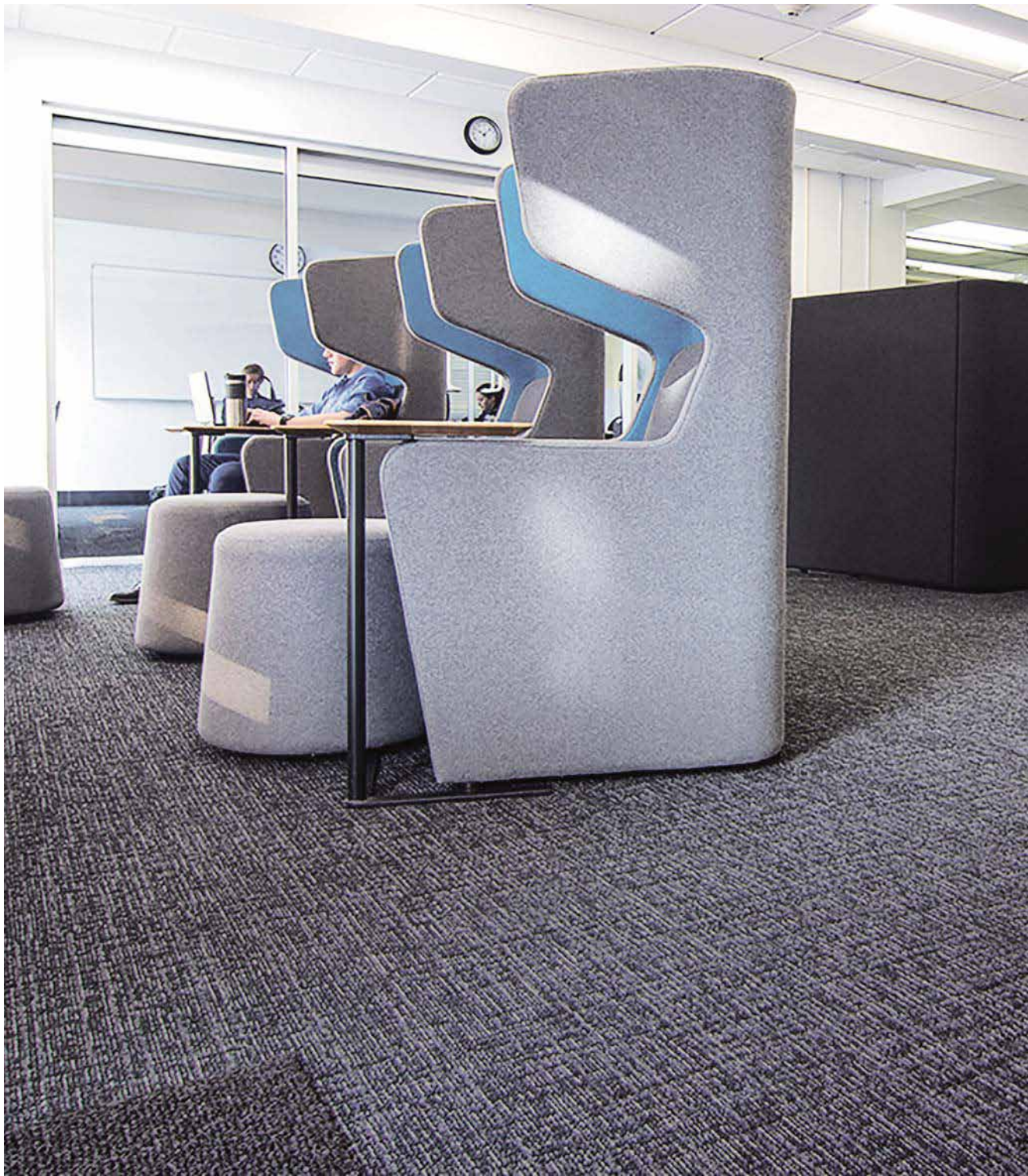
Horizontal Stair Step



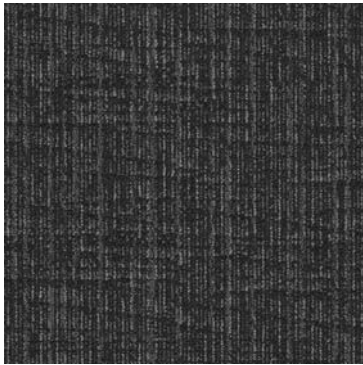
Horizontal Brick



CROSSLINE
CL 01_LASER GREY



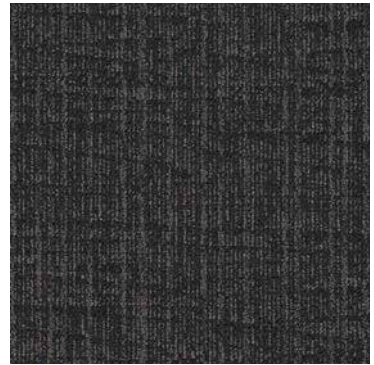
CL 03_GUN POWDER



Laser Grey_CL 01



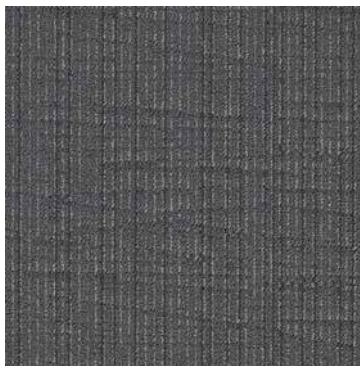
Shadow Grey_CL 02



Gun Powder_CL 03



Midnight_CL 04



Metal Bar_CL 05



Golden Rod_CL 06



Embankment_CL 08



Marree_CL 09

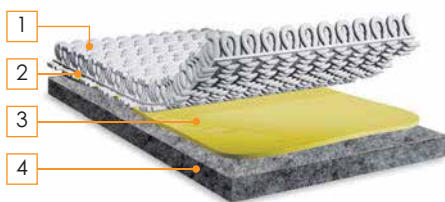


Outback_CL 10

Performance

Traffic Classification	BS EN 1307: 2014, Class 33 Heavy commercial use
Castor Chair Rating	BS EN 985, > 2.4 continuous use
Dimensional Stability	BS EN 986, < 0.20%
Electrostatic Propensity	AATCC 134, < -3Kv
Light Fastness	ISO 105 B02 min, 6
Thermal Resistance	0.17 m ² K/W
Antimicrobial	AATCC-174, Part 2

Construction



1. Surface pile nylon with soil repellent and stain protection
2. Polyester spunbond primary backing
3. High quality thermo bonding composite
4. ecostep® sound absorption backing

Flammability

Flooring radiant test	ASTM E 648, Class 1
Smoke density	ASTM E 662, < 450
Hot Metal Nut	BS 4790, Low radius effects of ignition

Acoustic Performance

Sound Absorption	ASTM C423-09a				
Frequency(Hz)	250	500	1000	4000	2000
Absorption Coefficient	0.07	0.31	0.51	0.50	0.51
Average Coefficient(aw)	NRC 0.35				
Impact sound insulation class	ASTM E989-06		IIC 66		
Sound transmission class	ASTM E413-16		STC 52		

Sustainability :

Indoor Air Quality US Green Building Council (LEED) & CRI Green Label Plus compliant for VOCs emission rate limits

Accreditation

- Australian Carpet Classification Scheme (ACCS) : Environmental Classification Scheme, ECS Level 4-maximum points.
- Singapore Green Label-Environmentally Friendly carpet certificate # 039-009.
- Manufactured under management system certified as complying with ISO 9001 & ISO 14001

PVC Minimization 100% PVC and bitumen free

Recycled Content Post-consumer recycled content minimum 25% by weight of product

Specifications are based on average from normal manufacturing tolerances, such variations do not effect product performance. Florplan® reserve the right to improve the specification of their product without prior notice.

As with all quality carpets, slight variation in color may occur from dye lot to dye lot. Protective chair pads are recommended under office chairs with roller castors to preserve appearance retention and to avoid excessive wear.



Indoor Advantage™ Gold



039-009-3545



ECS Level 4



ISO 9001:2015



ISO 14001:2015

Feltech Manufacturing Co.,Ltd

Amata City Chonburi Industrial Estate. 700/377, Moo 6,
Bangna-Trad Rd., Km. 57, Chonburi, 20000, Thailand.

+66 2 240 3041-2

info@feltech.co.th
www.feltech.co.th



Indoor
Advantage™
Gold



039-009-3545



ECS Level 4



ISO 9001:2015



ISO 14001:2015