



# BOUNDARY

25\*100

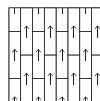
[www.feltech.co.th](http://www.feltech.co.th)

# BOUNDARY

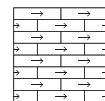
## SPECIFICATIONS

Construction	Textured Tufted Loop Pile
Pile Content	Solution dyed nylon with anti static filaments
Pile Treatment	Stain Protector & Soil Repellent
Machine Gauge	1/10
Pile Thickness	4 mm +/- 10%
Total Thickness	8 mm +/- 10%
Tufted Density	200,000 / m <sup>2</sup>
Primary Backing	100% non woven synthetic spunbond
Secondary Backing	EcoStep®, sound absorption backing (80% recycled PET bottles)
Tile Size	25 cm x 100 cm
No.of Tiles per box	20 Tiles (5.00 SQ.M)

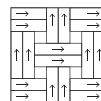
## Installation Method



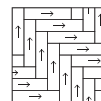
Ashlar



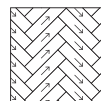
Brick Lay



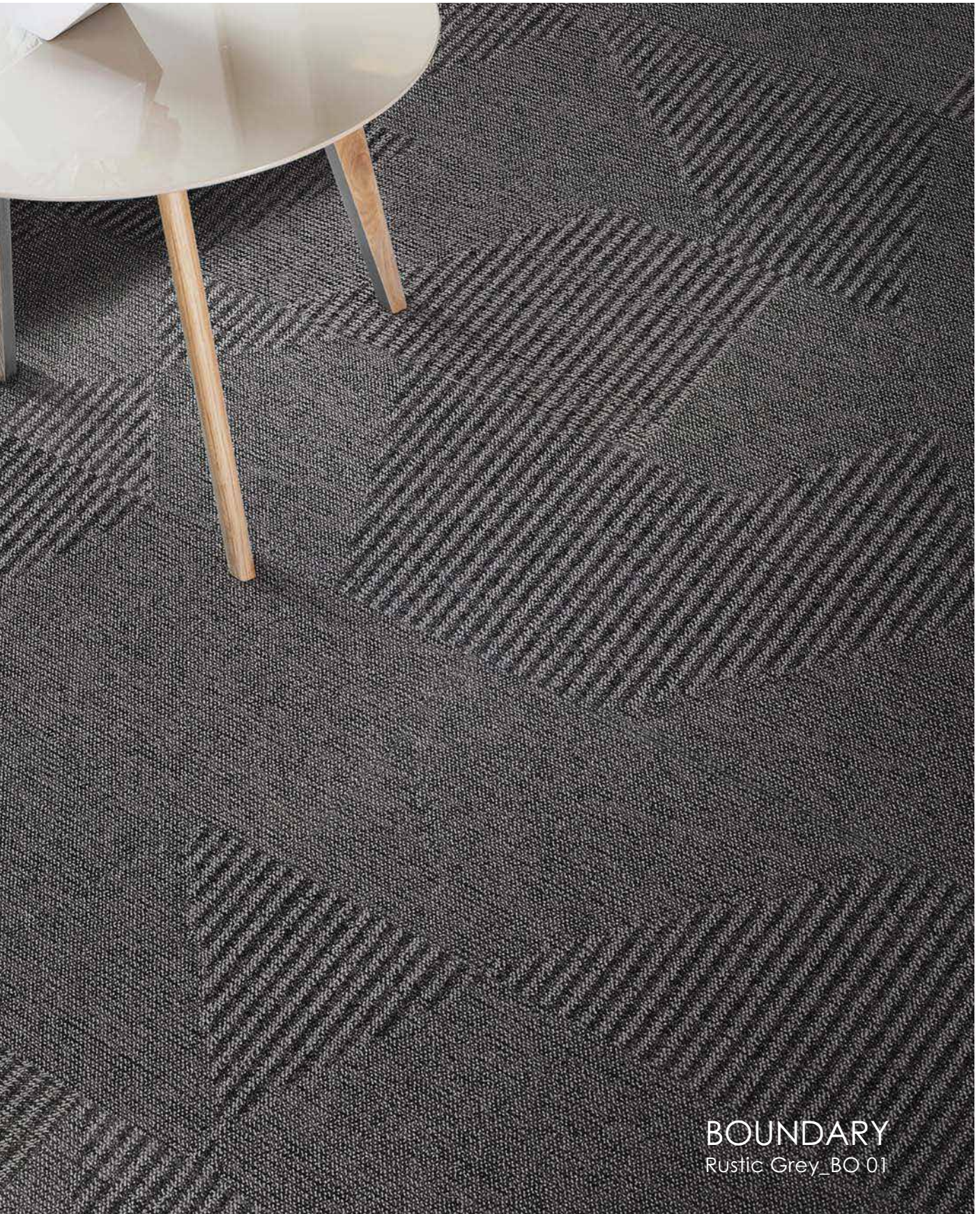
Weave



Herringbone



Herringbone  
45°



BOUNDARY  
Rustic Grey\_BO 01



Silk Road\_BO 06



Rustic Grey\_BO 01



Nickel\_BO 02



Beyond Grey\_BO 03



Coastal\_BO 04



Forest Moss\_BO 05

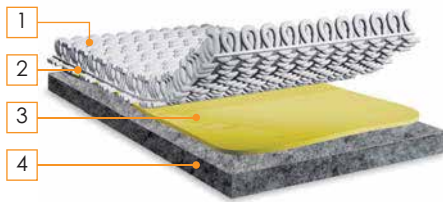


Silk Road\_BO 06

## Performance

Traffic Classification	BS EN 1307: 2014, Class 33 Heavy commercial use
Castor Chair Rating	BS EN 985, > 2.4 continuous use
Dimensional Stability	BS EN 986, < 0.20%
Electrostatic Propensity	AATCC 134, < -3Kv
Light Fastness	ISO 105 B02 min, 6
Thermal Resistance	0.17 m <sup>2</sup> K/W
Antimicrobial	AATCC-174, Part 2

## Construction



1. Surface pile nylon with soil repellent and stain protection
2. Polyester spunbond primary backing
3. High quality thermo bonding composite
4. ecostep® sound absorption backing

## Flammability

Flooring radiant test	ASTM E 648, Class 1
Smoke density	ASTM E 662, < 450
Hot Metal Nut	BS 4790, Low radius effects of ignition

## Acoustic Performance

Sound Absorption	ASTM C423-09a				
Frequency(Hz)	250	500	1000	4000	2000
Absorption Coefficient	0.07	0.31	0.51	0.50	0.51
Average Coefficient(aw)	NRC 0.35				
Impact sound insulation class	ASTM E989-06		IIC 66		
Sound transmission class	ASTM E413-16		STC 52		

## Sustainability :

Indoor Air Quality US Green Building Council (LEED) & CRI Green Label Plus compliant for VOCs emission rate limits

Accreditation

- Australian Carpet Classification Scheme (ACCS) : Environmental Classification Scheme, ECS Level 4-maximum points.
- Singapore Green Label-Environmentally Friendly carpet certificate # 039-009.
- Manufactured under management system certified as complying with ISO 9001 & ISO 14001

PVC Minimization 100% PVC and bitumen free

Recycled Content Post-consumer recycled content minimum 25% by weight of product

Specifications are based on average from normal manufacturing tolerances, such variations do not effect product performance. Florplan® reserve the right to improve the specification of their product without prior notice.

As with all quality carpets, slight variation in color may occur from dye lot to dye lot. Protective chair pads are recommended under office chairs with roller castors to preserve appearance retention and to avoid excessive wear.



Indoor Advantage™ Gold



039-009-3545



ECS Level 4



ISO 9001:2015



ISO 14001:2015

# Feltech Manufacturing Co.,Ltd

Amata City Chonburi Industrial Estate. 700/377, Moo 6,  
Bangna-Trad Rd., Km. 57, Chonburi, 20000, Thailand.

+66 2 240 3041-2

info@feltech.co.th  
www.feltech.co.th



Indoor  
Advantage™  
Gold



039-009-3545



ECS Level 4



ISO 9001:2015



ISO 14001:2015