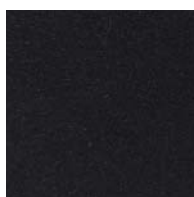




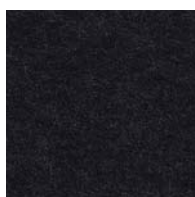
Product Name	acoupanel® (AP12)
Product Category	Wall and ceiling
Material	100% Polyester fibers with > 60% recycled content
Weight	2,400 gram/sq.m +/-
Density	200 kgs/Cubic.m +/-
Thickness	12 mm +/-10%
Size	1,220 mm x 2,800 mm
Performance	
Sound Transmission Class	STC 5, ISO 717 Part 1
Sound Absorption	NRC 0.45 with no air gap, ISO 354
	Sound Absorption Coefficients(α_s)
(Hz)	125 250 500 1000 2000 4000
Frequency f	0.06 0.02 0.23 0.61 0.89 0.95
Color Fastness to Light	> 6, ISO 105 B02-1994
Reaction to Fire	EN 13501-1, Class B-s1, d0
Indoor Air Quality	Low VOCs emission, formaldehyde and Phenol-free
Moisture Content	< 0.10% by weight



Available Solid colors



Piano Black
12PB



Flint *
12FL



Charcoal
12CH



Slate Grey
12SL



Grey
12GR



Metal
12ME



Turmeric *
12TU



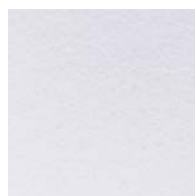
Butter
12BU



Popcorn
12PO



Wheat *
12WE



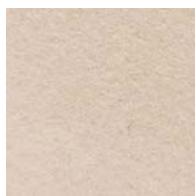
White
12WH



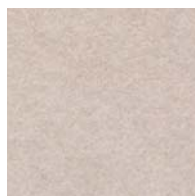
Platinum
12PL



Ivory
12IV



Pearl
12PE



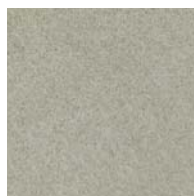
Almond *
12AL



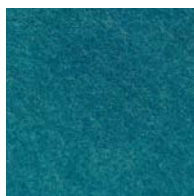
Pitascho
12PI



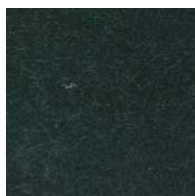
Eucalytus *
12Eu



Celery *
12CE



Peacock
12PEA



Kale
12KA



Oregano
12OR



Thistle
12TH



Sencha *
12SC



Wasabi
12WA



Denim
12DE



Azure
12AZ



Sea Salt *
12SE



Periwinkle
12PER



Marine
12MA



Iris
12IR



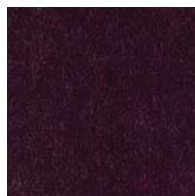
Amethyst *
12AM



Lilac
12LI



Berry
12BE



Shiraz *
12SH



Midnight Blue
12MI



Granite *
12GRA



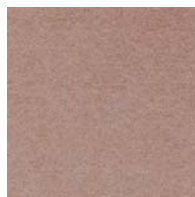
Valentine *
12VA



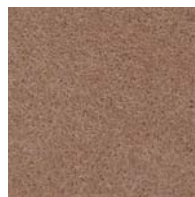
Flamingo*
12FL



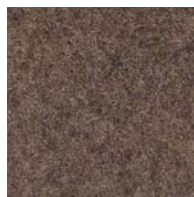
Peach
12PH



Quartz *
12QU



Umber *
12UM

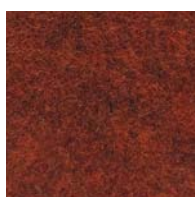


Walnut *
12WN

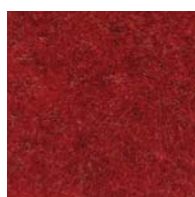
acoupanel[®]
acoustic wall & ceiling



Scan for download



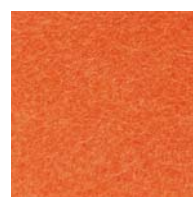
Peppercorn
12PE



Currant *
12CU



Lipstick
12LS



Carrot
12CA